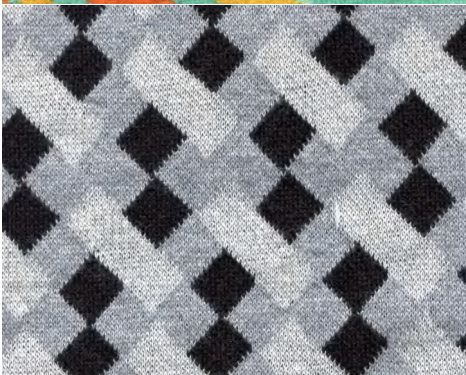
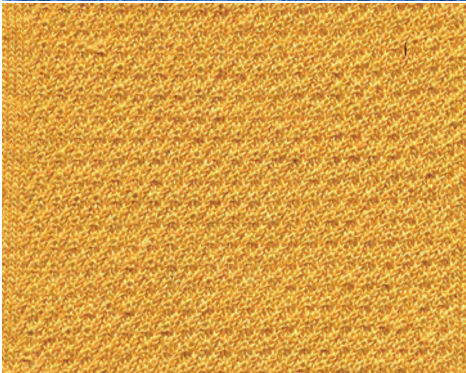
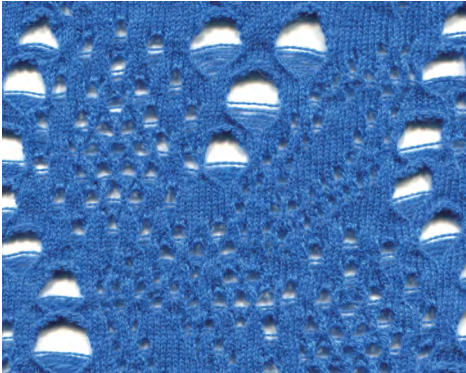
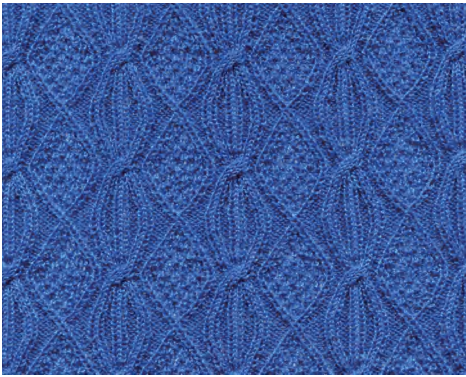




双机头电脑横机

DOUBLE-HEAD COMPUTERIZED FLAT
KNITTING MACHINE





高性能编织机

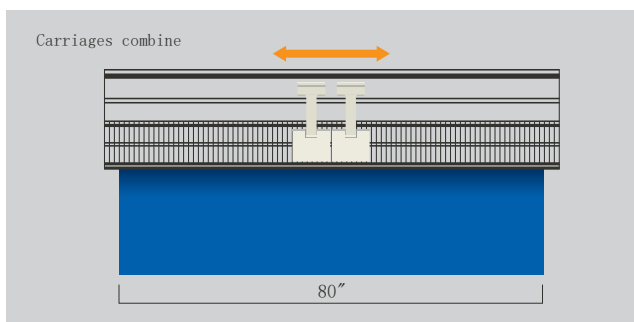
Higt Performance Knitting Machine

龙星280T系列全提花编织机，专门针对领片，下兰，成型衣片，宽幅织物产品生产开发的机型。可分离合并的机头，增加生产的灵活性及提高单机产量。280T系列部分机型使用选针系统使用直选针技术，天线台使用陶瓷耐磨抗静电天线台，简单的穿纱操作。机头合并可支持80寸满针幅编织，280T机型为高性价比，可生产多用途织物。

The 280T SERIES is a full jacquard machine developed especially for economical knitting of collars full fashion cardigan and wide knitting fabric, as well as full-width panels and even shaping. Full tandem knitting capability for increased flexibility and high productivity. The 280T series model also features advanced knitting technology such as a new electric direct needle selection system, ceramic wear resistant top tensions with one-touch threading and combine carriage as two system knitting 80inch full needle bed. The 280T offers high cost-per performance suitable for the production of a vast assortment of knitted items.

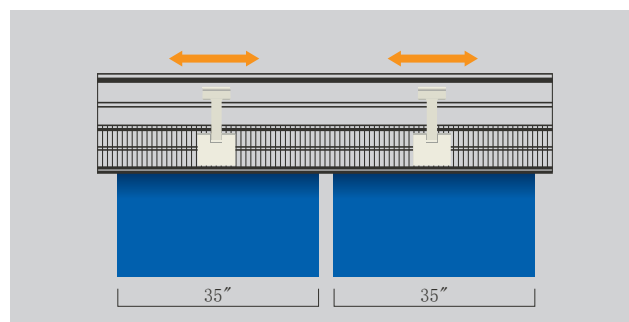


机头可根据产品灵活分离合并
Tandem and combine carriage working model flexibility



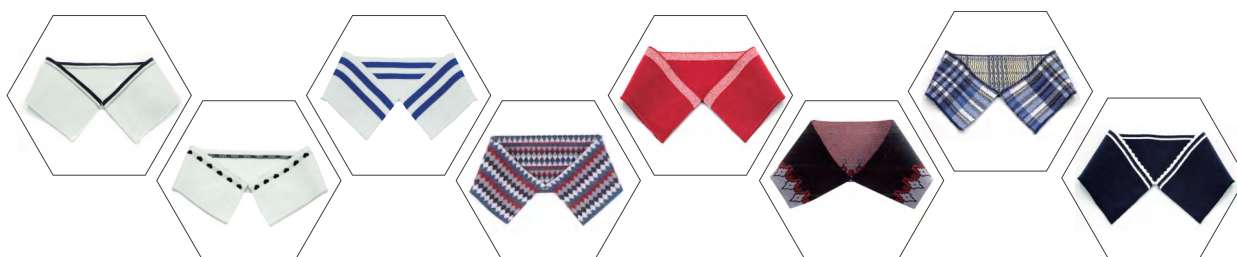
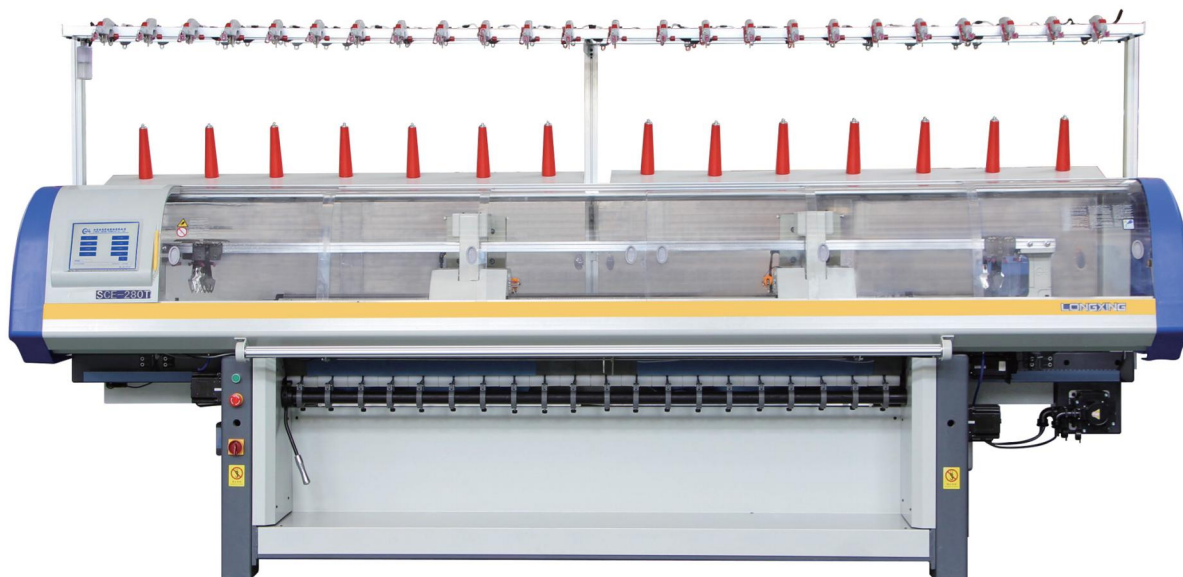
280T有两个机头，每个机头独立的直选针系统。机头合并可等效为2系统80英寸机器。带翻针功能的机型还能编织成型衣片。通过分离纱线可以连续编织节省纱线。串联机头可以增加产品适应性，高效能。

The 280T is equipped two carriages, each with a full direction selection system. Carriage can combine together working as two knitting system and 80 inch full bed knitting in combine mode. Furthermore, shaping capability, multi-piece function support more than 7 pieces knited independently in one time, without wasting materials through drawn thread divide. Tandem operation in the 280T thereby allows the machine to support a variety of production methods, significantly increasing the flexibility and productivity of the machine.



机头分离模式能够用于生产高质量领片，袖子。机头分离可编织宽度35英寸，工作等效于两台单系统的机器。每个机头可同时编织同样的花型。

Carriage tandem model can be use for knitting high quality collar sleeve. Carriage separate knitting wide 35inch work ask two single system machine. Two carriage work same time with same design.

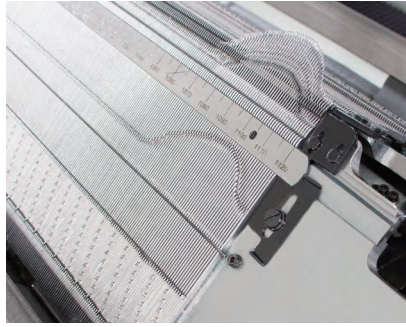




陶瓷耐磨型天线台
Ceramic wearproof
top tensions tension device

陶瓷天线台配备有一线穿纱功能，纱结探测功能。内置高效灵敏的感应器，高分子材料陶瓷耐磨型导纱瓷珠，对于化纤有较好的抗耐磨特性。

The top tension device is equipped a convenient easy threading system for quick threading yarn. When knots are detected during knitting, machine will be auto stop. The top tension device have effective quality control sensor for detecting yarn break. It use high polymer ceramic material for wearproof when yarn or chemical fiber through the tension plate and yarn guider ring. Yarn supply tension spring is adjustable for different yarn count and different gauge.



坚硬的镶片针板
Tough insert needle bed

280T系列可选配镶片式针板。每片镶片通过热处理及抛光研磨，提高镶片的坚硬度。每片镶片在损坏严重的情况下可跟换，提高机器的使用寿命。

280T series model use insert needle bed(optional). Insert use tough steel under hardness and polish process, make needle bed toughly. spacer and insert is changeable when series damage instead of change needle bed. Machine use-life extend. Needle groove with higher precision make fabric quality improve.



新一代控制系统
New Generation Control System

支持一行多度目设置，多片编织可以对每片使用不同的度目设置。可扩展的接口支持机器联网操作和其他扩展功能。编织宽度和行数支持控制系统内直接修改，对于不同尺寸的产品切换非常便捷。机头移动与摇床动作可同时进行，提高了编织效率。

Dynamic stitches (density) can be set on a line, multi-piece can set different density for different piece. The flexible control algorithm can support network system and expansion function. The knitting width and height can be directly modified in control system, easy to change different size production. The carriage moving and racking at same time with optimize carriage stroke improve knitting efficiency.



辅助纱架
Extra yarn support

280T配备24个天线台，为多片编织提供更多的纱线放置，特配置额外的置纱板。

280T series machine is equipped 24 pcs top tensions. Supply multi-pieces knitting. Machine is equipped extra yarn stand for extra yarn cone.



LED触摸屏
LED touch screen

采用LED触摸屏，可显示各种编织相关参数

LED touch screen for displaying various knitting related parameters



采用加大加粗卷布轮设计，充分满足双面组织对牵拉力的更高要求以及增强牵拉的平稳性能

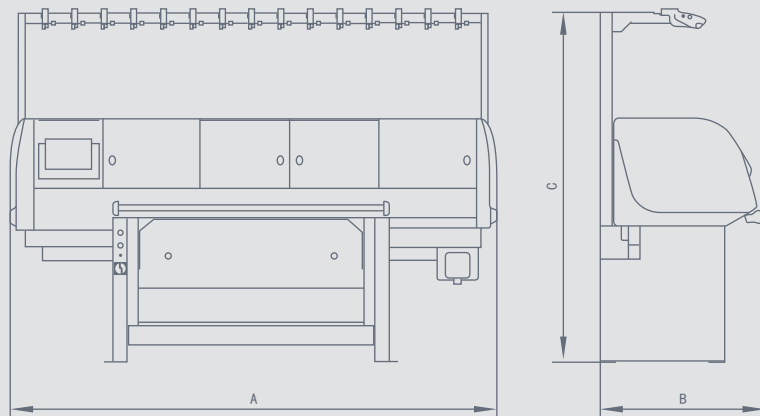
The use of the increased thickening fabric winding roller design fully meets the higher requirements of the double-sided organization fabric on the drawing force and enhances the smooth performance of the drawing.

产品参数

Model 机器型号	LX280T	SCE280T(F)	LXC280T
Basic parameters 基础参数	● Standard configuration ○ Optional — Without		
Gauge 针型	12G/14G/16G/18G		
Carriage 机头数量	2	2	2
Knitting system 编织系统	1 SYSTEM	1 SYSTEM	1 SYSTEM
Width (INCH) 宽度 (英寸)	80	80	80
Inset needle bed 插片针板	○	○	●
Running speed (M/S) 运转速度 (米/秒)	1.4	1.4	1.4
SMALL Carriage 小机头	●	●	●
Probe 探针	●	●	●
Motor transfer 马达翻针	—	●	○
Machine two side tool box 两边工具箱	—	—	—
Cleaning system 清洁系统	—	—	—
Motor driving selection JACK raise cam 马达换向	—	—	○
Needle bed racking 针板摇床	±1inch	±1inch	±1inch
Sinker 信克	—	—	●
Lubrication system (auto, manual, none) 润滑系统 (自动、手动、无)	—	—	Manual
Tight tuck 紧吊目	—	—	—
Dynamic density 可变量目	●	●	●

Model 机器型号	LX280T	SCE280T (F)	LXC280T
Take down device 牵拉系统	● Standard configuration ○ Optional — Without		
Rubber roller 皮罗拉	○	○	○
Auto down roller 自动开合下罗拉	—	—	—
Manual down roller 手动开合下罗拉	●	●	●
Comb 起底板	—	—	—
Wire comb 无废纱起底	—	—	—
Scissors 剪刀夹子	—	—	—
Yarn device 喂纱装置	● Standard configuration ○ Optional — Without		
Top tension 天线台数量	24 PCS	24 PCS	24 PCS
Lycra feeder 氨纶送纱器	●	●	●
Yarn storage device 储纱器	—	—	—
Yarn supplier device 送纱器	●	●	●
Yarn carrier 纱嘴	● Standard configuration ○ Optional — Without		
Carrier quantity 纱嘴数量	12 PCS	12 PCS	16 PCS
Auto motor-driven carrier 智跑纱嘴	—	—	—
Up-and-down motion carrier 自动上下纱嘴	—	—	—
Weft insetion carrier 衬纬纱嘴	—	—	—
Ultra-wide adjustable carrier (34-47mm) 超宽可调节纱嘴 (34-47毫米)	—	—	—
Double holes 双孔纱嘴	○	○	○

Model 机器型号	LX280T	SCE280T (F)	LXC280T
Safty device 安全装置	● Standard configuration ○ Optional — Without		
Emergency stop devices 紧急停车装置	●	●	●
Safty cover with infrared ray 护罩红外感应	●	●	●
Power cut off device 断电记忆	●	●	●
Alarm device 报警装置	● Standard configuration ○ Optional — Without		
Fabric rewind alarm (infrared ray) 布片倒卷报警 (红外线)	—	—	—
Fabric rewind alarm (detection board) 布片倒卷报警 (倒卷板)	●	●	●
Needle crash alarm 撞针报警	●	●	●
Yarn breakage alarm 断纱报警	●	●	●
Yarn knot alarm 纱结报警	●	●	●
Stroke protection device (racking) 摇床限位报警	●	●	●
Stroke protection device (carriage) 机头限位报警	●	●	●
Over load alarm 过载报警	●	●	●
Knit piece finish alarm 编织件数完成报警	●	●	●
Sepecific row stop 指定行停车	●	●	●
Program error 程序错误	●	●	●
Power 电源	● Standard configuration ○ Optional — Without		
AC 220V ± 5%(1phase 50/60Hz) 单相220V、50/60HZ	●	●	●
AC 380V ± 5%(3phase 50/60Hz) 三相380V、50/60HZ	○	○	○
Power consumption 功率	1.5KW	1.5KW	1.5KW



机型差异表
PRODUCT DIFFERENCE COMPARISON

MACHINE MODEL 机型	SELECTION SYSTEM 选针系统	TRANSFER 翻针功能	INTARSIA KNITTING 嵌花功能	SINKER SYSTEM 信克系统	MAX RACKING 摇床幅度	MULTI-PIECES 多片编织	NEEDLE BED 针床
LX280T	直选DIRECTION	否 NO	否NO	否NO	1英寸 INCH	是 YES	一体 (插片可选) CUT (INSERT OPTIONAL)
SCE280T	直选DIRECTION	是YES	否NO	否NO	2英寸 INCH	是 YES	一体 (插片可选) CUT (INSERT OPTIONAL)
LXC280T	3位选针3-WAY	是YES	是YES	是YES	2英寸 INCH	是 YES	插片INSERT

机器型号 MACHINE MODEL	外形尺寸(毫米) BOUNDARY DIMENSTON(mm)	包装尺寸(毫米) PACKAGE DIMENSTON(mm)	净重(kg) NET WEIGHT(KG)	毛重(kg) GROSS WEIGHT(KG)
	长×宽×高(A×B×C) LENGTH×WIDTH×HEIGHT(A×B×C)	长×宽×高 LENGTH×WIDTH×HEIGHT		
LX280T	3715×815×1850	3900×1050×1820	870	1190
SCE280T	3715×815×1850	3900×1050×1820	870	1190
LXC280T	3720×900×1900	3900×1050×1820	1350	1600

苏州梵洲科技有限公司

SUZHOU FANZHOU TECHNOLOGY CO.,LTD

江苏省常熟市阳光大道8号

No.8 Yangguang Road,Changshu City, Jiangsu, China

电话 T +86-15250337092

传真 F +86-15250337092

邮箱 E Juanschuan@gmail.com

Website: www.fanzhoultd.com

Whatsapp: +86-15250337092



Website



Wechat



Whatsapp