



经济型电脑横机

ECONOMICAL COMPUTERIZED FLAT
KNITTING MACHINE

SCE131/SCE252/LXE252



梵洲科技
FANZHOU TECHNOLOGY



SCE131/SCE252/LXE252

经济型电脑横机，超高性价比的机型，配置直选式选针系统、全电机小板、电机纱嘴切换器。编织效率较高，机器运行稳定可靠，能够满足基本的生产需求，是投资创业的首选机型。

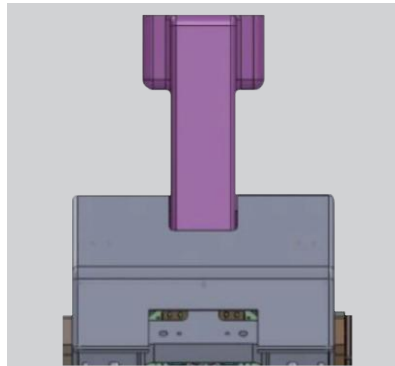
economical computerized flat knitting machine, which is super cost-effective machine, equipped with direct selection system, motor-controlled cam system, motor-controlled feeder system. it has the feature of high knitting efficiency, more stable and reliable operation, etc. It can meet the basic production requirements, so it is the preferred model for customer to invest or to start a business.





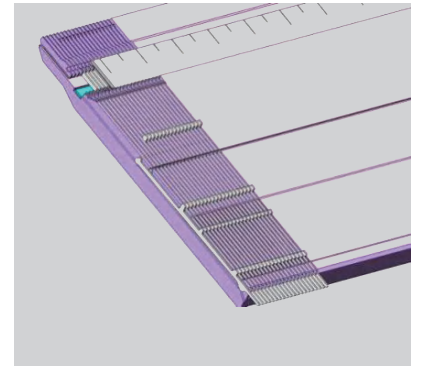
采用LED触摸屏，可显示各种编织相关参数

LED touch screen for displaying various knitting related parameters



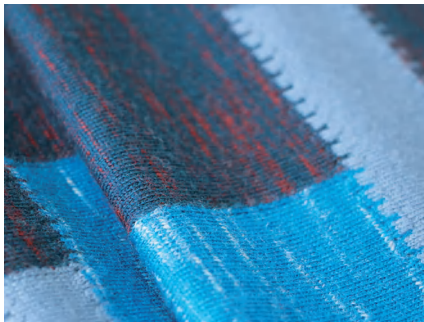
采用直选针系统，搭配精巧机头，机器运行更经济高效

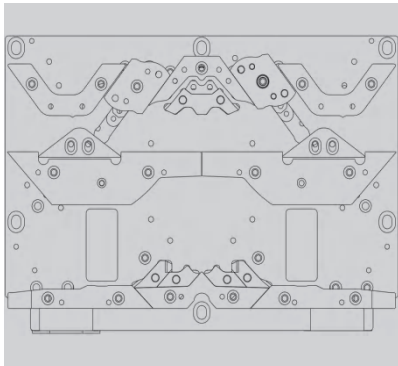
With a directly needle selection system, small carriage, makes the machine more effective



精密织针与八段选针系统配合设计，针板高频淬火处理，使针织运行更加平稳

Precision needle and 8-segment needle selection system, and the needle plate is quenched by high frequency to meet the production requirements of high quality collar fabrics





全电机控制的直选针三角系统，结构简单，尺寸紧凑、轻巧

Fully motor controlled directly needle selection cam system with simple structure, compact size and light weight

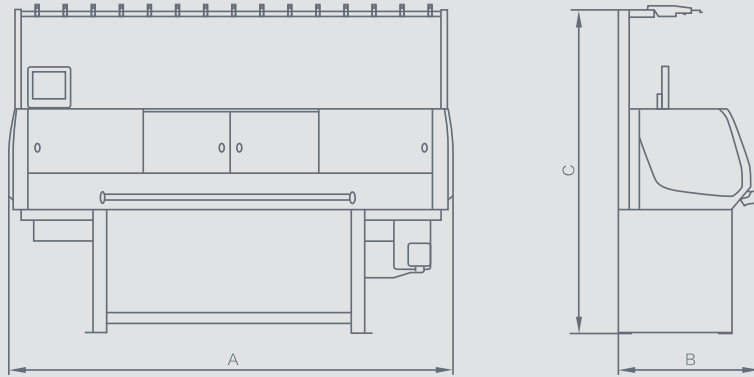


产品参数

Model 机器型号	SCE131A	SCE252/LXE252
Basic parameters 基础参数	● Standard configuration	○ Optional — Without
Gauge 针型	7G/8G/9G/10G/12G/14G	
Carriage 机头数量	1	1
Knitting system 编织系统	1 SYSTEM	2 SYSTEM
Width (INCH) 宽度 (英寸)	52	52
Inset needle bed 插片针板	○	○
Running speed (M/S) 运转速度 (米/秒)	1.4	1.4
SMALL Carriage 小机头	●	●
Probe 探针	●	●
Motor transfer 马达翻针	●	●
Machine two side tool box 两边工具箱	○	○
Cleaning system 清洁系统	—	—
Motor driving selection JACK raise cam 马达换向	—	—
Needle bed racking 针板摇床	± 1 inch	± 1 inch
Sinker 信克	○	○
Lubrication system (auto, manual, none) 润滑系统 (自动、手动、无)	—	—
Tight tuck 紧吊目	—	—
Dynamic density 可变量目	●	●

Model 机器型号	SCE131A	SCE252/LXE252
Take down device 牵拉系统	● Standard configuration	○ Optional — Without
Rubber roller 皮罗拉	●	●
Auto down roller 自动开合下罗拉	—	—
Manual down roller 手动开合下罗拉	○	○
Comb 起底板	○	○
Wire comb 无废纱起底	○	○
Scissors 剪刀夹子	○	○
Yarn device 喂纱装置	● Standard configuration	○ Optional — Without
Top tension 天线台数量	10 PCS	10 PCS
Lycra feeder 氨纶送纱器	—	—
Yarn storage device 储纱器	—	—
Yarn supplier device 送纱器	●	●
Yarn carrier 纱嘴	● Standard configuration	○ Optional — Without
Carrier quantity 纱嘴数量	12 PCS	16 PCS
Auto motor-driven carrier 智跑纱嘴	○ Max 6 pcs	○ Max 8 pcs
Up-and-down motion carrier 自动上下纱嘴	—	—
Weft insetion carrier 衬纬纱嘴	—	—
Ultra-wide adjustable carrier (34-47mm) 超宽可调节纱嘴 (34-47毫米)	—	—
Double holes 双孔纱嘴	○ Max 4 pcs	○ Max 4 pcs

Model 机器型号	SCE131A	SCE252/LXE252
Safty device 安全装置	● Standard configuration	○ Optional — Without
Emergency stop devices 紧急停车装置	●	●
Safty cover with infrared ray 护罩红外感应	●	●
Power cut off device 断电记忆	●	●
Alarm device 报警装置	● Standard configuration	○ Optional — Without
Fabric rewind alarm (infrared ray) 布片倒卷报警（红外线）	●	●
Fabric rewind alarm (detection board) 布片倒卷报警（倒卷板）	—	—
Needle crash alarm 撞针报警	●	●
Yarn breakage alarm 断纱报警	●	●
Yarn knot alarm 纱结报警	●	●
Stroke protection device (racking) 摇床限位报警	●	●
Stroke protection device (carriage) 机头限位报警	●	●
Over load alarm 过载报警	●	●
Knit piece finish alarm 编织件数完成报警	●	●
Sepecific row stop 指定行停车	●	●
Program error 程序错误	●	●
Power 电源	● Standard configuration	○ Optional — Without
AC 220V ± 5%(1phase 50/60Hz) 单相220V、50/60HZ	●	●
AC 380V ± 5%(3phase 50/60Hz) 三相380V、50/60HZ	○	○
Power consumption 功率	0.8 KW	1 KW



机器型号 MACHINE MODEL	外形尺寸(毫米) BOUNDARY DIMENSION(mm)	包装尺寸(毫米) PACKAGE DIMENSION(mm)	净重(kg) NET WEIGHT(KG)	毛重(kg) GROSS WEIGHT(KG)
	长 × 宽 × 高(A×B×C) LENGTH×WIDTH×HEIGHT(A×B×C)	长 × 宽 × 高 LENGTH×WIDTH×HEIGHT		
SCE131	2435×815×1850	2650×1050×1820	565	730
SCE252/LXE252	2435×815×1850	2650×1050×1820	585	750

苏州梵洲科技有限公司

SUZHOU FANZHOU TECHNOLOGY CO.,LTD

江苏省常熟市阳光大道8号
No.8 Yangguang Road,Changshu City, Jiangsu, China

电话 T +86-15250337092

传真 F +86-15250337092

邮箱 E Juanschuan@gmail.com

Website: www.fanzhoultd.com

Whatsapp: +86-15250337092



Website



Wechat



Whatsapp